

5 YEARS WARRANTY

IP 65

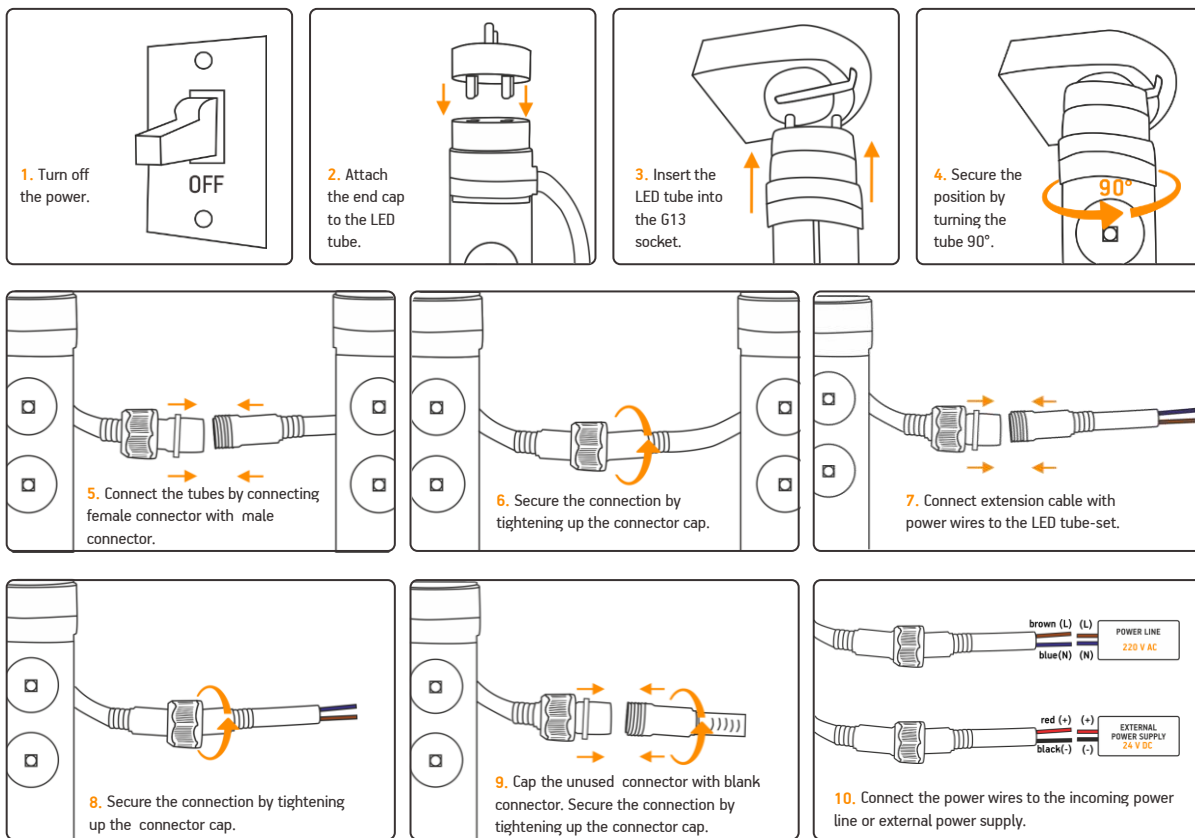
CE

RoHS Compliant

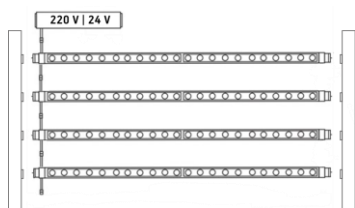
—

# RETROFIT 3T TUBE INSTALLATION GUIDE

READ THE INSTRUCTIONS CAREFULLY BEFORE MOUNTING



## CONNECTION SCHEME



## MOUNTING AND USING RECOMENDATIONS

- Before installing make sure, that the fixing area can bear the total weight of the retrofit tubes.
- Please install retrofit tubes with appropriate cables. There is a possibility, that cables may get disconnected due to contractions, caused by temperature changes.
- Please check that sulfur constituent is not contained in used components when the retrofit tubes are installed.
- Make sure to install retrofit tubes in a place with sufficient breathability in order to prevent lifetime reduction by heat. The operating temperature should not exceed +50 °C.
- When installing the retrofit tubes in a fixture (signboard), make sure to provide ventilation for constituent sulfur, drainage for rainwater to prevent aged deteriorations.
- When fixing cables of retrofit tubes do not use metal cable stop. The tunic of the cable may be damaged and therefore lead to short-circuit.

5 YEARS WARRANTY

IP 65

CE

RoHS Compliant



# RETROFIT 3T TUBE INSTALLATION GUIDE

## MOUNTING AND USING RECOMENDATIONS

- Be sure to install the retrofit tubes at a maintainable place.
- Do not push the retrofit tubes through force if they do not fit in a fixture (signboard).
- In order to prevent LEDs from breaking down caused by static electricity, make sure not to touch the metal parts of the cable directly with bare hands.
- If any signs of smoke or the smell of burning plastic occurs, turn off the retrofit tubes immediately and investigate the power supply and the wiring carefully.
- Make sure to record and keep the product lot and installation date of the retrofit tubes.

## STORAGE AND MAINTANANCE CONDITIONS

- Before the maintenance, turn off the power and maintain the retrofit tubes after tubes cool down. Otherwise, electric shock or burn may occur.
- Do not pull the wiring while removing the retrofit tubes to prevent possible disconnections.
- Make sure to store the retrofit tubes at dry places, avoid elevated temperatures, high pressures, vibrations, corrosive or combusive gas, direct sunlight.
- Do not wipe or spray retrofit tubes with inflammable products such as alcohol, benzine, or paint thinner as it may lead to combustion and malfunctioning.
- Retrofit tubes cannot operate at the presence of materials containing sulfur components or where sulfur-containing gas is generated as it leads to changes in light color and malfunctioning.

## GENERAL CONDITIONS

- Installation of the retrofit tubes must be carried out by a qualified technician according to handling standards of electrical equipment.
- Retrofit tubes and power supply have an absolute maximum rating. Comply with the specifications to avoid failures or combustion.
- Avoid placing any high-temperature objects around the retrofit tubes, also avoid putting cloth or paper on the retrofit tubes. It may lead to combustion, burnout, overheat, failure, deformation.
- Retrofit tubes cannot be used in high-temperature environments, also they must not be subjected to vibration, shock, particles, corrosive or combusive gas. If not followed, it may cause fire, burnouts, bad insulation, failures, overheating, and injuries.
- Do not insert or remove power plugs with wet hands to avoid electrical shock.
- While connecting or disconnecting electrical cords avoid being close to any heating equipment. It may lead to the melting of the cords cause electrical shock.
- Do not cut, bend, or modify in any way the retrofit tubes. This may lead to electrical shock, failure, burnout, changes in retrofit tube color.
- Do not install the retrofit tubes under direct sunlight or falling water. This may lead to electrical shock, burnouts, overheat, even combustion.
- Retrofit tubes cannot be used in combination with other types of retrofit tubes, as this may lead to failure.
- Retrofit tubes can be used at ambient temperatures ranging from -20 °C to +50 °C.